



GAT MONTHLY MEMBERSHIP PROGRESS REPORT

Results as of: 6/30/2023

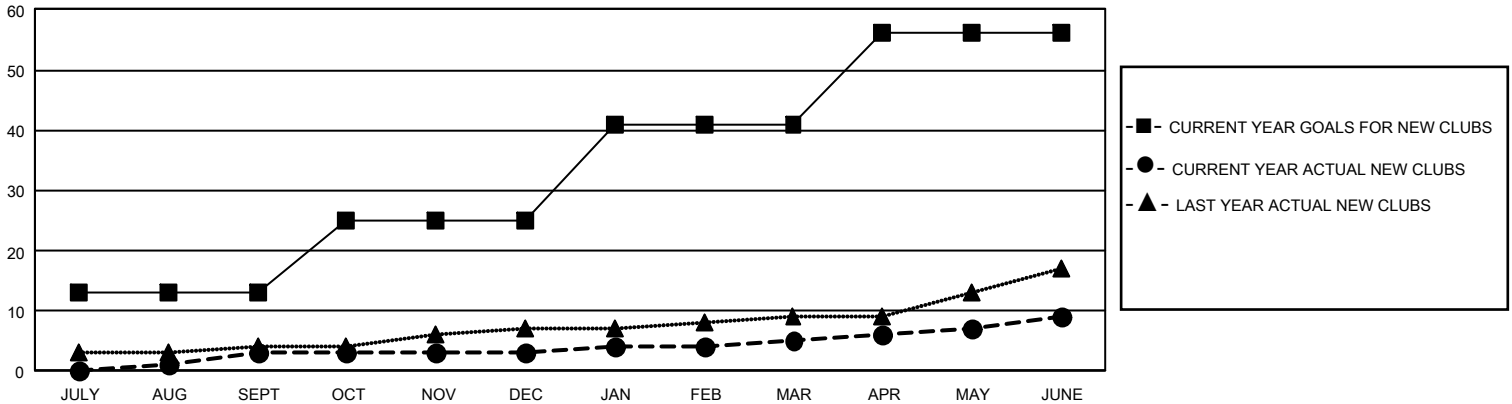
GMT Constitutional Area 1, Group B

REPORT DOES NOT INCLUDE CLUBS IN UNDISTRICTED AREAS.

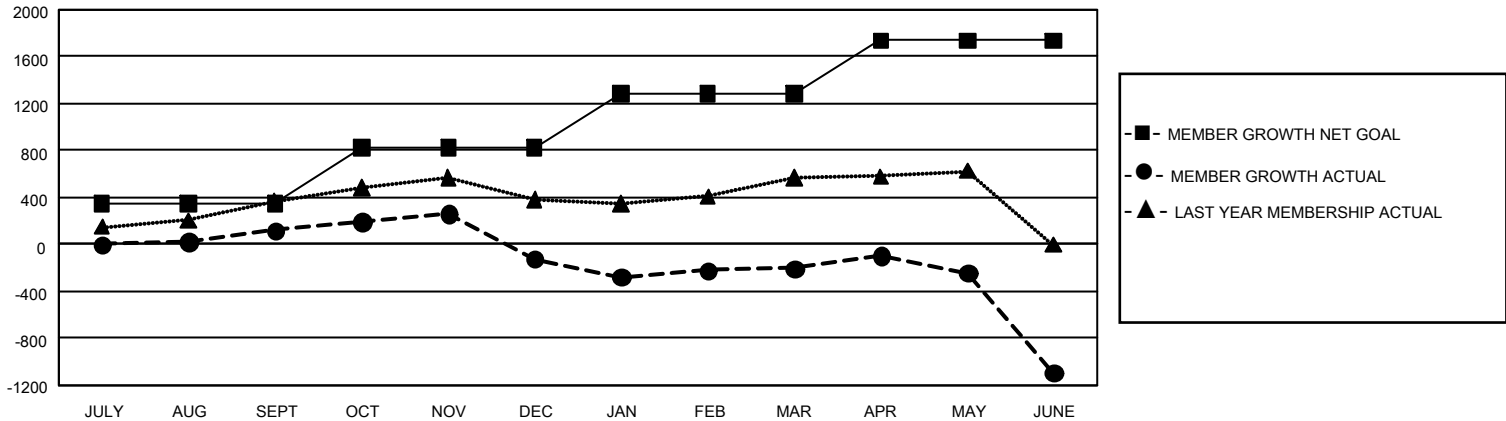
Clubs			
RESULTS FOR 2022-2023			
QUARTER	NEW CLUB GOAL	NEW CLUBS	DROPPED CLUBS
JULY/AUG/SEPT	39	3	5
OCT/NOV/DEC	36	0	17
JAN/FEB/MAR	48	2	4
APR/MAY/JUNE	45	4	15

Members			
RESULTS FOR 2022-2023			
QUARTER	MEMBER GROWTH NET GOAL	MEMBER GROWTH ACTUAL	DROPPED MEMBERS ACTUAL (including transfers)
JULY/AUG/SEPT	345	1,023	803
OCT/NOV/DEC	482	779	945
JAN/FEB/MAR	460	928	849
APR/MAY/JUNE	452	1,185	1,862

GOALS AND ACTUAL NEW CLUBS CUMULATIVE



GOALS AND ACTUAL MEMBERS CUMULATIVE



DROPPED CLUBS: 41	
DROPPED MEMBERS	
DECEASED	384
CLUB CANCELLED	270
OTHER	3,808
TOTAL	4,462

604 CLUBS OF 911 ADDED 1 OR MORE NEW MEMBERS

[CLICK HERE FOR CUMULATIVE MEMBERSHIP DATA](#)

GENDER DISTRIBUTION	
MALE	13,369 (57.76%)
FEMALE	9,760 (42.17%)
NON BINARY	1 (0.00%)
PREFER NOT TO ANSWER	17 (0.07%)
TOTAL FAMILY UNIT MEMBERS	4,589
FAMILY MEMBERS PAYING HALF DUES	2,428